

XV

s e r i e s

Vision Tester



Inspection



Easy



Speed



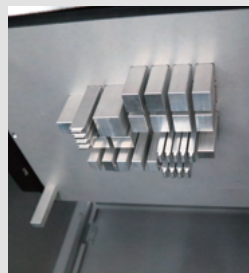
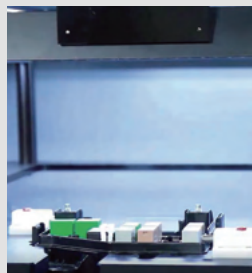
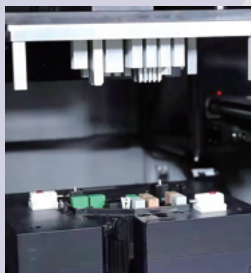
UI

- Inspects Under-hood fuse box for components using machine vision camera
- Press plate and press block press fit at once
- Easily change process by changing jigs(press jigs and U/H fuse box settling jigs) when changing models



► Media for this

XV Vision Tester



Technical Data

ITEM	XV300
OPERATING SYSTEM	Microsoft Windows 10
OPERATING LANGUAGE	Korean, English, Chinese, Spanish, etc.
POWER	A.C 100~240V 50/60Hz Built in UPS
WEIGHT	350 kg
SIZE	1530(W)x775(D)x1900(H) mm (Include NF)
WORKING RANGE	280 X 350 mm
DISPLAY	24" FHD Display
SOCKET	63L-3/8(8mm, 10mm, 12mm)
OPERATING PRESSURE	0.4~0.55 MPa
COMMUNICATION PORT	LAN
etc.	Built in OS Recovery System

Options



• Barcode Scanner



• Label Printer

• LOG System(DB)

• MES Connection Available

• UI System Customizing

• System Customizing

HARNICS
FROM TECH TO INNOVATION

Headquarters

#1313, 184, Gasan digital 2-ro, Geumcheon-gu, Seoul 08501, Republic of Korea

China Branch

No. 1-2, Tianning Road, Caomiaozi Town, Lingang Economic and Technological Development Zone, Weihai, Shandong 264211, China
(山东省威海临港经济技术开发区草庙子镇天宁路1-2号)

Vietnam Branch

Lot CN7-3, Yen Phong II-C Industrial Park, Cho Town, Yen Phong District, Bac Ninh Province 16206, Vietnam



www.harnics.com