

RV

s e r i e s

Robot Vision Tester



Inspection



Easy



Speed



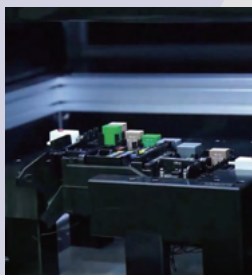
UI

- Robot vision tester that has a function to insert relays and fuses with accurate force and height
- Built a perfect darkroom that improves the accuracy of vision inspection
- By precisely manipulating the insertion force and height, the failure rate of relays and fuses has been reduced



► Media for this

RV Robot Vision Tester



Technical Data

ITEM	RV100	RV200
OPERATING SYSTEM	Microsoft Windows 10	
OPERATING LANGUAGE	Korean, English, Chinese, Spanish, Japanese etc.	
POWER	A.C 100~240V 50/60Hz Built in UPS	
CONSUMPTION	Max. 650 W	
WEIGHT	512 kg	430 kg
SIZE(mm)	1500(W) x 1100(D) x 1900(H)	1100(W) x 1150(D) x 1900(H) (TEST BED : Customized)
DISPLAY	24" FHD LCD	
WORKING PRESSURE	0.5~0.6 MPa	
MOVEMENT RESOLUTION	0.1 mm	
ROBOT WORKING AREA	400(W) x 100(D) x 500(H) mm	
TEST UNIT	Relay, Fuse, PCB Block, etc.	
RESOLUTION	5M Pixel (2592x1944)	
MOVE SPEED	X, Y : 600 mm/sec Z : 100 mm/sec	X : 500 mm/sec Y : 600 mm/sec Z : 100 mm/sec
PRESS FORCE	Max. 20 kgf	
FORCE RESOLUTION	0.2 kgf	
OCR	English, Numeric	
TEST SIZE	350(W) x 170(D) x 280(H) mm	
VISION TEST SPEED	10 sec/item	
RELAY TEST VOLTAGE	-	Available with Relay Tester of HARNICS
OPTION	MES, Unit Insert Guide System, Area Sensor	
etc.	Editor, Item Checking System, Log System, Image Log System, Export Excel File, Operation System Unit Press System, Image Processing System, Built in OS Recovery System	

Headquarters

#1313, 184, Gasan digital 2-ro, Geumcheon-gu, Seoul 08501, Republic of Korea

China Branch

No. 1-2, Tianning Road, Caomiaozi Town, Lingang Economic and Technological Development Zone,
Weihai, Shandong 264211, China
(山东省威海临港经济技术开发区草庙子镇天宁路1-2号)

Vietnam Branch

Lot CN7-3, Yen Phong II-C Industrial Park, Cho Town, Yen Phong District, Bac Ninh Province 16206, Vietnam

