

TPS

s e r i e s

Terminal Position Scanner



Inspection



Easy



Speed



UI



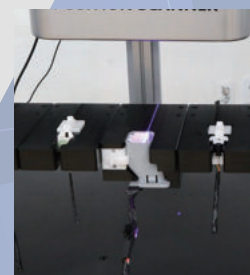
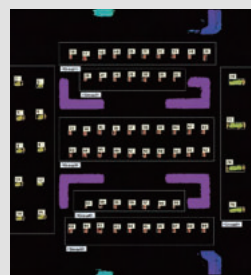
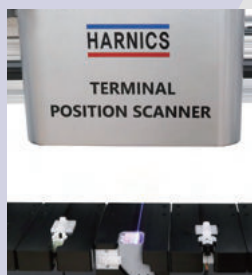
Safety

- To inspect the assembly of the tab terminal of the wiring harness
- Use line laser-based 3D scanning technology
- Inspection of tap terminals with defects(bent, missing and not fully inserted)



► Media for this

TPS Terminal Position Scanner



ITEM	TPS
POWER	A.C 100~240V 50/60Hz Built in UPS
SIZE	1900(W)x800(D)x1800(H) mm
CAMERA INPUT POWER	D.C 12~24V
ROBOT WORKING AREA	X : 1000 mm, Y : 200 mm, Z : 200 mm
MOVEMENT RESOLUTION	0.01 mm
TEST MOVE SPEED	50 mm/sec
VISION TEST SPEED	0.2 sec/pin
IMAGE SENSOR	2.2 Megapixel, Global Shutter
RESOLUTION	2048(Columns) x 1088(Rows)
PIXEL SIZE	5.5 X 5.5 μ m
BIT DEPTH	10 Bit
COLOR FORMAT	Mono

Headquarters

#1313, 184, Gasan digital 2-ro, Geumcheon-gu, Seoul 08501, Republic of Korea

Hwaseong Branch

1085-33, Beodeul-ro, Jangan-myeon, Hwaseong-si, Gyeonggi-do 18574, Republic of Korea

China Branch

No. 6-3, Changxing-Road, Economic & Technological Development zone, Weihai, Shandong, China(山东省威海经济技术开发区昌星路6-3号)

Vietnam Bac Ninh Branch

Yen phong zone, Long Chau commune, Yen Phong distric, Bac Ninh province, Vietnam

