

# XV

s e r i e s  
**Vision Tester**



Inspection



Easy



Speed



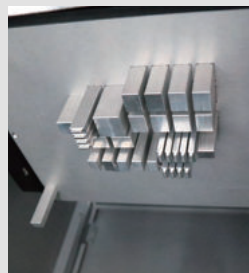
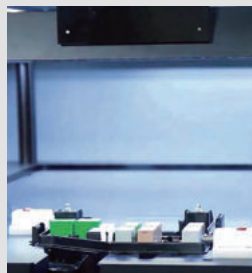
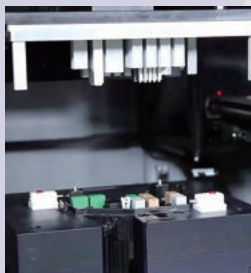
UI

- Inspects Under-hood fuse box for components using machine vision camera
- Press plate and press block press fit at once
- Easily change process by changing jigs(press jigs and U/H fuse box settling jigs) when changing models



► Media for this

# XV Vision Tester



ITEM	XV200
OPERATING SYSTEM	Microsoft Windows 10
OPERATING LANGUAGE	Korean, English, Chinese, Spanish, etc.
POWER	A.C 100~240V 50/60Hz Built in UPS
WEIGHT	466 kg
SIZE	1100(W)x800(D)x2100(H) mm
WORKING PRESSURE	0.5~0.6 MPa
DISPLAY	24" FHD LCD
TEST SPEED	≤20 sec
RESOLUTION	2M Pixel x 2 (1920x1080)
TEST SIZE	350(W)x170(D)x280(H) mm
COMMUNICATION PORT	USB, LAN

## Options



• Barcode Scanner



• Label Printer

• Unit Press JIG

• Unit Insert Guide System

• UI System Customizing

• System Customizing

### Headquarters

#1313, 184, Gasan digital 2-ro, Geumcheon-gu, Seoul 08501, Republic of Korea

### Hwaseong Branch

1085-33, Beodeul-ro, Jangan-myeon, Hwaseong-si, Gyeonggi-do 18574, Republic of Korea

### China Branch

No. 6-3, Changxing-Road, Economic & Technological Development zone, Weihai, Shandong, China(山东省威海经济技术开发区昌星路6-3号)

### Vietnam Bac Ninh Branch

Yen phong zone, Long Chau commune, Yen Phong distric, Bac Ninh province, Vietnam

